

CENTRIFUGAL IN-LINE DUCT FANS

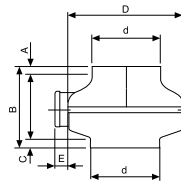


MODELS	PROTECTION	m³/h	l/s	dB(A)*	Pa	W
AXC 100 A	IPX4	195	54	40	350	70
AXC 100 B	IPX4	250	69	45	380	70
AXC 125 A	IPX4	245	68	42	310	70
AXC 125 B	IPX4	325	90	45	340	70
AXC 150 A	IPX4	400	111	46	310	70
AXC 150 B	IPX4	530	147	45	420	80
AXC 160 A	IPX4	440	122	46	330	70
AXC 160 B	IPX4	700	194	47	420	110
AXC 200 A	IPX4	750	208	50	350	80
AXC 200 B	IPX4	980	272	50	580	150
AXC 250	IPX4	1120	311	53	570	170
AXC 315 A	IPX4	1400	389	54	580	150
AXC 315 B	IPX4	1850	514	59	700	300
AXC 355 A	IPX4	2200	611	57	349	240
AXC 355 B	IPX4	2350	653	77	902	650

* LpA of the casing, measured at 3 m distance in a room's equivalent absorption area of 20 m².

DIMENSIONS (mm)

MODELS	A	B	C	∅D	∅d	E
AXC 100 A	12	215	24	245	98	38
AXC 100 B	12	215	24	245	98	38
AXC 125 A	11	214	24	245	122	38
AXC 125 B	11	214	24	245	122	38
AXC 150 A	21	216	23	245	147	38
AXC 150 B	22	230	22	333	148	38
AXC 160 A	24	215	24	245	157	38
AXC 160 B	21	230	22	333	158	38
AXC 200 A	22	230	27	333	198	38
AXC 200 B	22	230	27	333	198	38
AXC 250	22	230	35	333	248	38
AXC 315 A	30	297	52	404	314	38
AXC 315 B	30	308	52	404	314	38
AXC 355 A	44	400	50	484	355	38
AXC 355 B	44	400	50	484	355	38



AXC



Ball bearing motor as standard.

Versions

2 speed

